



Address: Hatchobori 3-3-1, Chuo-ku, Tokyo 〒104-0032

TEL: 03-6222-2001 FAX: 03-6222-2005

<http://www.jimh.or.jp/>

#### Services for Members

- Information data services

- Distribution of institute PR magazines
- Distribution of reports and statistical data

- Participation in workshop

The Japan Institute of Material Handling has sectional meetings and sessions for each type of machine, which address various subjects and tasks that the material handling equipment industry confronts, and seek clues to solve problems via the close exchange of information among members.

- Free admission tickets for exhibitions sponsored by this institute

- We accept applications for membership at any time.

Regular members (Manufacturers of material handling equipment and peripheral equipment: Annual membership dues :¥200,000\*  
Patronage members (Companies assenting to the objective of this session: Annual membership dues :¥120,000\*

\*To become a member in the mid-course of one-year period, please consult with us.



## Introduction

# A Message from the Chairman

The sector of logistical system and machinery manufacture has always played a vital part in the world of industry, and has contributed to our social infrastructure. But while these are sources of pride for us, I cannot help feeling that the existence of "logistical system and machinery" is still only poorly recognized by society at large. With logistics assuming ever greater importance as the economy begins to pick up, we launched the "Japan Institute of Material Handling" in July 2008 out of a desire to raise the social profile of the logistics system and machinery manufacturers that support this field in the front line. In January of the following year, we received approval as a general incorporated association, and are now taking on new challenges under the official title of "Japan Institute of Material Handling, General Incorporated Association".

The current financial climate is extremely harsh, and the companies in this sector are continuing to work hard. It is at times like this that I want to make it a sector which, though small, pulls together, each of the members honing their own respective technologies and competing with each other in their approaches to sales and service, while at the same time aiming for robust growth based on a global perspective. I hope with all sincerity that you will understand our founding philosophy and targets, and look forward to your positive involvement and use of our services.



Japan Institute of Material Handling  
General Incorporated Association  
Katsumi Takeuchi

## Main Activities

**Seminars** Holding seminars for management executives  
"Seminars for management executives" are held occasionally under the sponsorship of the institute. We invite top lecturers from outside of the institute and more than 100 members participate in each seminar.



**Exchange of Members** Holding a New Year's Day celebration and exchange party and the special lecture meeting  
In order to deepen the mutual friendship of members as well as to provide business references, a New Year's Day celebration and exchange party and a special lecture meeting with persons from member companies speaking are held.



**International Exchange** Holding the Japan-China material handling technical exchange meeting  
This meeting serves to develop the material handling equipment industry of both countries and explore new market through technical exchange with the Chinese Mechanical Engineering Society. The first exchange meeting was held in October 2009.



**Participating in the Japan-China material handling dialogues**  
We attended the first Japan-China material handling dialogue that was held in June 2010 in Beijing. A representative from this institute made a presentation about the material handling equipment industry and its market.



**Sessions for Each Type of Machine** Organizing sessions for storage, Conveyors and IT  
These sessions are created for each type of machine to identify various issues and tasks that may eventually occur with machinery, and streamline \ policies on technical improvement and standardization. For the general meeting, we invite lecturers from outside of the institute and hold study meetings.



## Vision

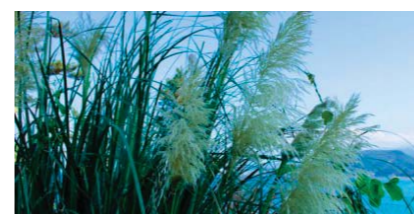
In the front-line sites of manufacturing and distribution industries, materials are continuously being moved from place to place and managed. The work of automating these activities and making them more efficient is known as Material Handling (MH). In recent years, corporate business has faced the challenge of applying MH and information technology (IT) to the systematic operation of factories and distribution centers. MH has a market scale of almost 1 trillion yen (storage equipment, transportation machinery, peripheral machinery), and is only poorly recognized by society at large, in comparison to the importance of its role. But in fact, logistics (including MH) constitute the very essence of corporate business, while MH also plays a vital role within supply chain management (SCM). Against this background, the role of the Japan Institute of Material Handling (JIMH) is to strengthen the infrastructure of the MH industry and develop it further, in close collaboration with the public sector. JIMH also contributes to improved productivity and better efficiency by bringing together system machinery and parts manufacturers with a strong grounding in the front line of logistics, thus positively addressing the needs of both society and industry. JIMH undertakes activities under the key concepts of ① promoting IT, ② reducing environmental load, and ③ globalization. These three elements are brought together in the following vision for the future shape of the industry.

### Further promoting IT in MH systems

The labor environment in the front line of distribution is going through some remarkable changes; for example, the workforce is shrinking due to population aging and declining birth rates, while front line operations are becoming increasingly sophisticated and efficient in response to market needs. With man-machine interfaces in mind, JIMH promotes the use of IT as well as RF-ID and other automatic identification technology in reducing work loads in the front line of distribution; it strives to provide systems that can respond flexibly to changes in the working population and the diversification of market needs. In future, JIMH also aims to research e-commerce markets, an area of astonishing growth recently, as a service to its members.



### Promoting MH systems with emphasis on mitigating environmental load



While various industries are striving to reduce environmental load and achieve a recycling-oriented society, efforts to care for the environment are also a matter of urgency for the MH industry. Another major theme is to promote the diffusion of energy saving equipment, in response to government-sponsored measures to reduce CO2 emissions in distribution centers and commercial warehouses. Thus, while drawing on the MH technology accumulated to date, JIMH would like to provide systems with emphasis on the environment and to propose various new solutions.

### Promoting international standards and industrial collaboration aimed at globalization

JIMH plans to engage in activities designed to diffuse MH systems on a global level. Initially, the focus will be on activities aimed at creating and expanding MH markets in China, India, East Asia and ASEAN. To that end, we will work together with the public sector and related organizations as well as our member companies, based on the premise of free competition, to promote further technical innovation and standardization. Meanwhile, we will also intensify exchanges with the countries of Asia and the rest of the world.



## Organization Chart

